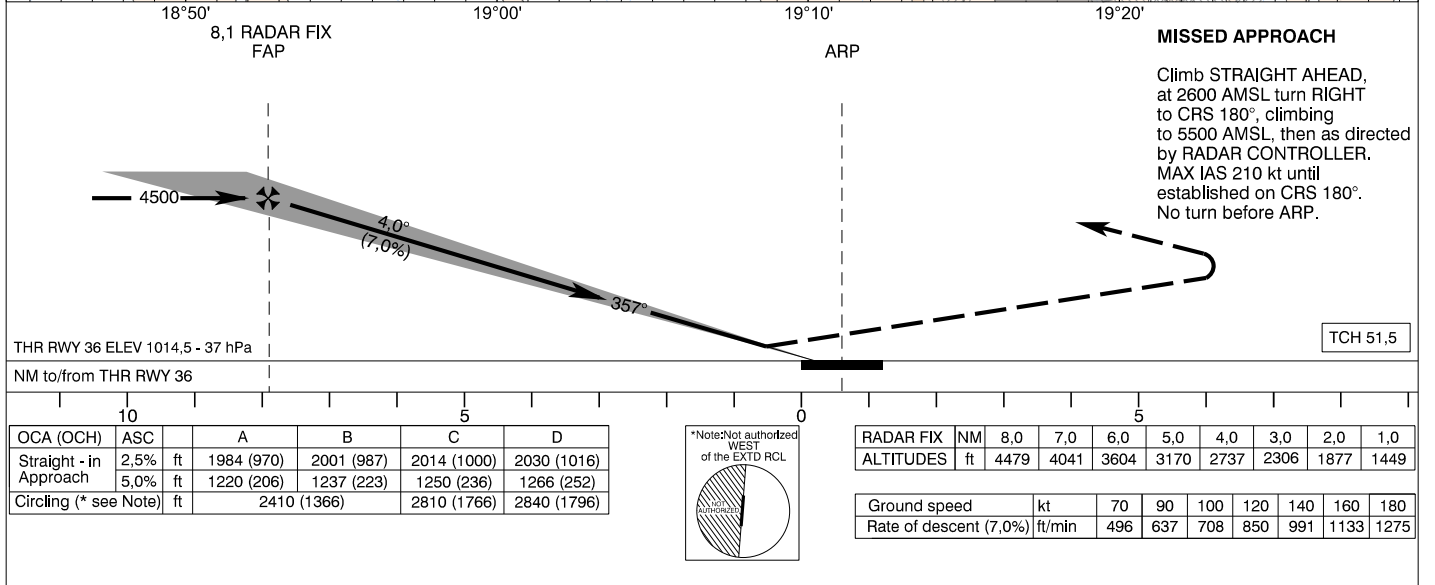
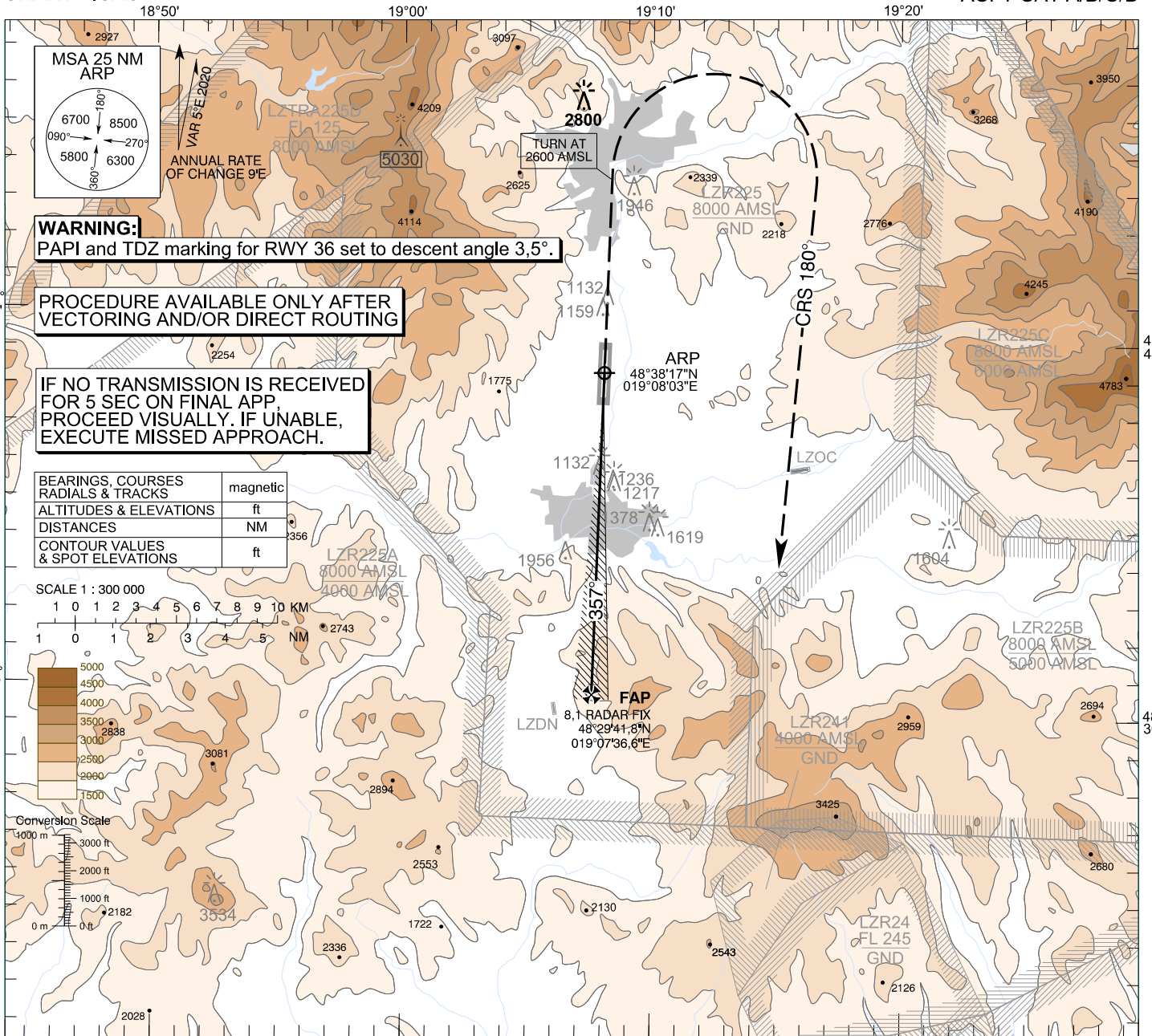


**INSTRUMENT
APPROACH
CHART - ICAO**

TRANSITION ALTITUDE
10 000 ft
AD ELEV 1044,0 - 38 hPa
THR RWY 36 ELEV 1014,5 - 37 hPa

SLIAČ APPROACH/RADAR 119,155
SLIAČ TOWER 122,905
SLIAČ PRECISION 343,475

**SLIAČ (LZSL)
PAR RWY 36
ACFT CAT A/B/C/D**



CHANGES: new chart