

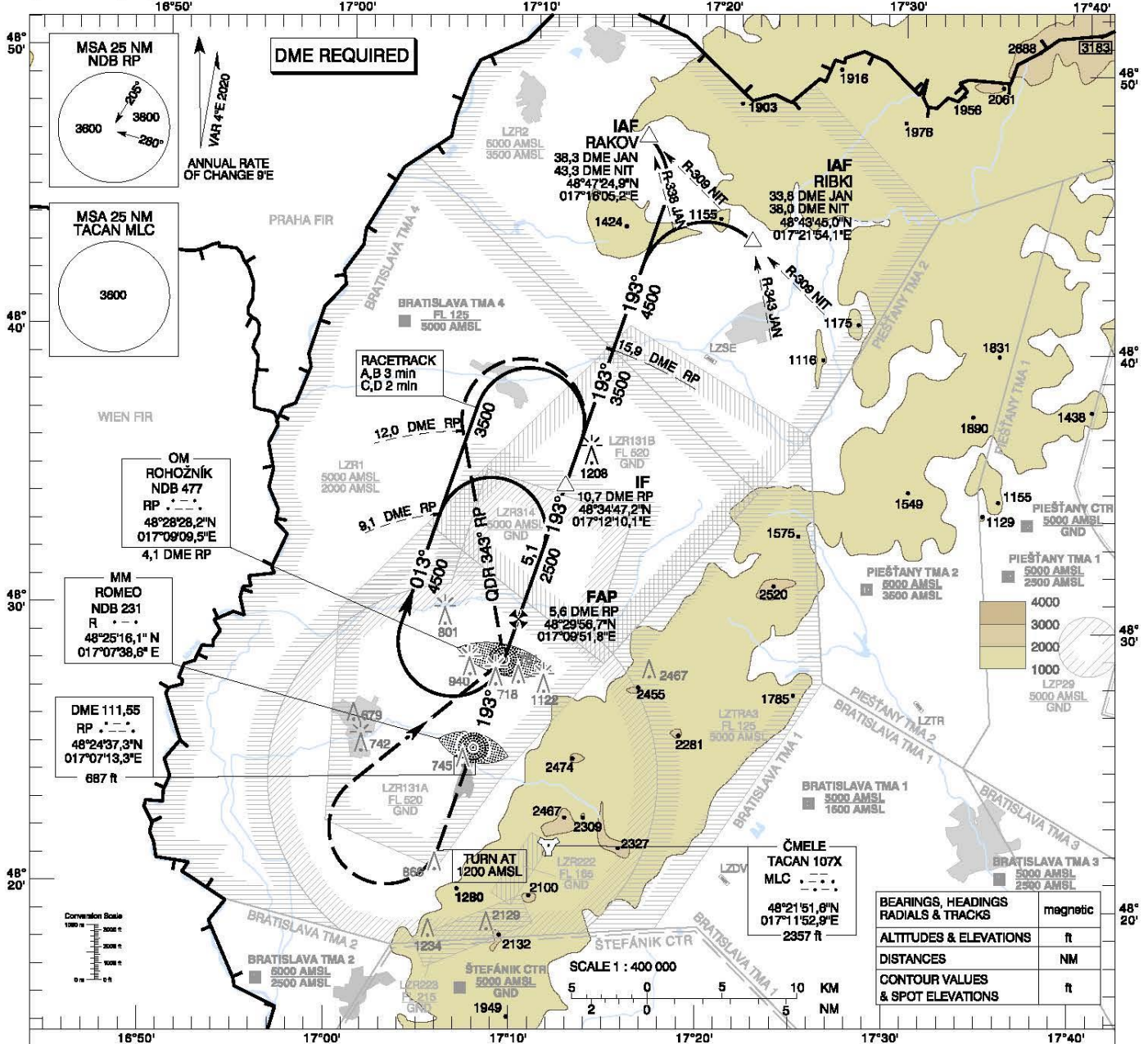
1. FROM 01.01.2020 00:01: AIRCRAFT ARRESTING NETS TYPE TFF-82 FOR RWY 01 AND 19 U/S. EST: UFN
2. FROM 01.01.2020 00:01: EMERGENCY GRASS STRIP CLSD. EST: UFN
3. FROM 17.12.2020 06:00: PILOTS MUST STRICTLY FOLLOW MARSHALERS INSTRUCTIONS AT APRONS. EST: UFN
4. FROM 20.04.2022 11:14: TWY F OUT OF SERVICE. EST: UFN
5. FROM 06.12.2022 15:30: ALTERNATE COMM LOSS PROCEDURE WITH ACTIVE AREA R131B: DEPARTING IFR TRAFFIC EXPERIENCING COMM LOSS BEFORE REACHING NDB RP, ENTER ALTERNATE HOLDING PATTERN ESTABLISHED AT NDB RP, 125 DEG MAG INBOUND COURSE, RIGHT TURNS, 1 MINUTE OUTBOUND LEG, MINIMUM HOLDING ALTITUDE 5000 FT. HOLD FOR 10 MINUTES THEN PROCEED ACCORDING TO AIP SR (ENR 1.1.11). EST: UFN
6. FROM 27.06.2023 05:00: SEQUENCED FLASHING LIGHTS FOR RWY19 U/S. EST: UFN
7. FROM 22.11.2023 06:00: TACAN IN RESTRICTED OPERATION U/S. EST: UFN
8. FROM 20.05.2024 15:00: PRECISION RADAR APPROACH AVAILABLE ONLY FOR AIRCRAFTS OF THE SLOVAK AIR FORCE ACCORDING TO CHART AD LZMC 7-5 (13JUL23). FOR AIRCRAFTS NOT OPERATED BY SLOVAK AIR FORCE PRECISION RADAR APPROACH NOT AVAILABLE. NDB/ILS/VISUAL APPROACH IN FORCE. EST: UFN

**INSTRUMENT  
APPROACH  
CHART - ICAO**

**TRANSITION ALTITUDE**  
10 000 ft  
AD ELEV 688 - 25 hPa  
THR RWY 19 ELEV 688 - 25 hPa

**MALACKY PRECISION 127,150**  
**MALACKY RADAR 120,750 (259,825)**  
**MALACKY TOWER 129,575 (120,750)**

**MALACKY (LZMC)  
PAR RWY 19  
ACFT CAT A/B/C/D**



**MISSED APPROACH**  
Climb STRAIGHT AHEAD, at 1200 AMSL turn RIGHT to NDB RP, climbing to 3500 AMSL. At NDB RP turn LEFT to track 343° (QDR 343° RP), at 12 DME RP turn RIGHT to join the hold or initiate another approach. MAX IAS 185 kt. No turn before MM.

**RDH 56,8**  
THR RWY 19 ELEV 688 - 25 hPa  
NM to/from THR RWY 19

OCA (OCH)	ASC	A	B	C	D
Straight - In Approach	2,5%	ft 951 (265)	963 (277)	971 (285)	982 (296)
Circling (* see Note)		ft 1120 (431)	1190 (501)	1650 (961)	1810 (1121)
VIS		m 1800	2800	3600	4600

**DME RP** NM 7,0 6,0 5,0 4,0 3,0 2,0 1,0  
**ALTITUDES** ft 2953 2624 2296 1970 1645 1323 1001

Ground speed	kt	70	90	100	120	140	160	180
Rate of descent (5,2%)	ft/mIn	372	478	531	637	743	849	955

**BEARINGS, HEADINGS RADIALS & TRACKS** magnetic  
**ALTITUDES & ELEVATIONS** ft  
**DISTANCES** NM  
**CONTOUR VALUES & SPOT ELEVATIONS** ft

SCALE 1 : 400 000

Conversion Scale: 1:100000

CHANGES: MAG VAR; MAG BRG; RDH; OCA(OCH) Straight - In Approach; ft and FAP position