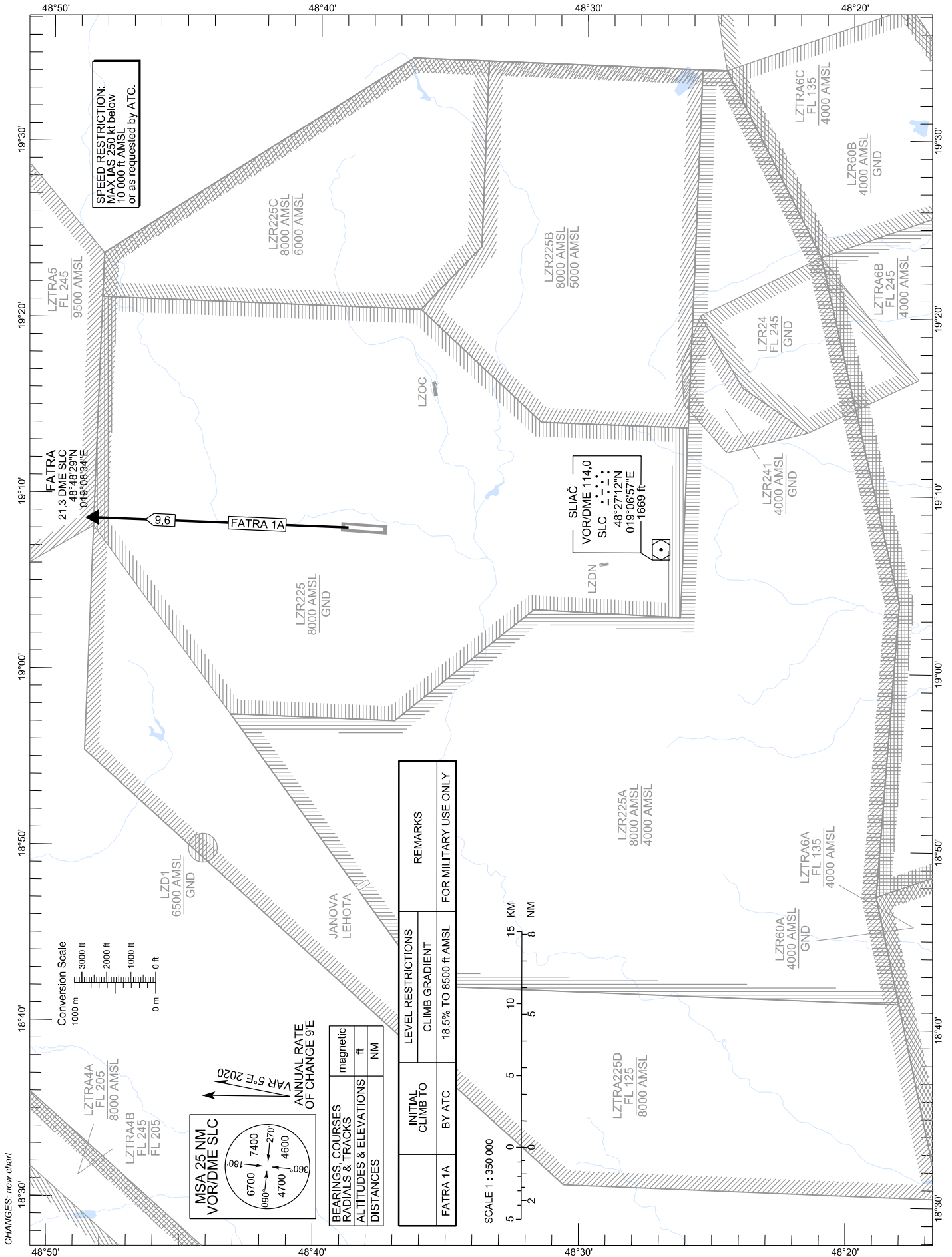


STANDARD DEPARTURE CHART -
INSTRUMENT (SID) - ICAO

TRANSITION ALTITUDE
10 000 ft

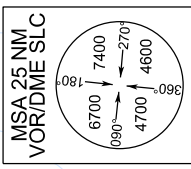
SLIAČ APPROACH/RADAR 119,155
SLIAČ TOWER 122,905

SLIAČ (LZSL)
SID RWY 36
ACFT CAT A/B/C/D
FATRA 1A



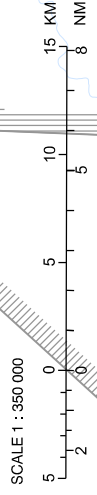
SPEED RESTRICTION:
MAX IAS 250 kt below
10 000 ft AMSL
or as requested by ATC.

SLIAČ
VOR/DME 114.0
SLC
48°27'12"N
019°06'57"E
1668 ft



BEARINGS, COURSES RADIALS & TRACKS	magnetic
ALTITUDES & ELEVATIONS	ft
DISTANCES	NM

FATRA 1A	BY ATC	LEVEL RESTRICTIONS	REMARKS
		CLIMB GRADIENT	
		18.5% TO 8500 ft AMSL	FOR MILITARY USE ONLY



CHANGES: new chart